

especially critical that two persons work together when three (3) or more parts are being assembled into a non-linear configuration, with the helper holding the furniture components stable.

Step 7

Place the seat cushions with zipper down onto each furniture component. Components with a back or side have notches in the seat cushion; the notch fits to the frame members. Wrap the snap straps around the base support wires and snap closed. Place the seat backs with zippers down onto each furniture component. The corner module back pieces have a left and right; the corner receives the “wedge”. Connect the snap to the underside of the back frame member. Add the bolsters (optional), and enjoy!

If you have difficulty understanding any of the instructions and need assistance while fastening your components together, please call Tropitone’s Customer Service Center at 949-951-2010.



Cabana Club Collection Component Assembly Instructions

Congratulations on the purchase of your Tropitone Cabana Club Collection. Read through all steps before fastening components together.

CAUTION: Do not try to lift or flip furniture components with only one person. Components may be heavy and awkward to handle, and may result in injury to persons or damage to property if not lifted properly.

Tools Required 7/16” Wrench

Parts List Connector Plates – 2 each 1/4” x 3/4” Thumb Screws – 2 each 1/4” x 7/8” Hex Head Screws – 2 each



Tropitone Furniture Co., Inc.
5 Marconi, Irvine, CA 92618

949 951 2010 phone
www.tropitone.com

Part # R9TCCCAI
Revised: 053007

Cabana Club Collection

Component Assembly Instructions

- ✓ Check that all items listed in the Parts List are in your carton.

Step 1

Components can be assembled in upright position by reaching under frame members. Proceed to next step.

OR

Prepare a smooth, non-scratch surface (a tarp or pool towels can be placed on your work surface) so the components can be placed side-by-side for assembly. With two persons, tilt the components onto their side to allow access to the bottom of the pieces. Insure flat side surfaces are down for stability.

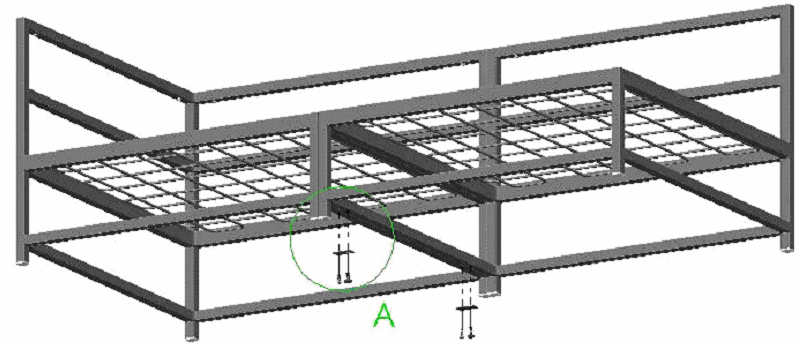
NOTE: When components are being assembled together, two persons are required during assembly, with the helper holding the furniture components stable. This is especially critical when three (3) or more parts are being assembled into a non-linear configuration.

Step 2

Using a ¼" hex head screw, attach a connector plate through the drilled hole (not the slotted hole) in the first furniture component. See Detail A in the diagram. Tighten the screw hand tight, so the plate can swing.



Detail A



Step 3

Repeat Step 2 with the remaining ¼" hex head screw and connector plate in the same furniture component, at the second plate location. See Detail A in the diagram.

Step 4

Insert the thumb screws in the second furniture component – tighten just a few turns. Swing the connector plates so the slotted holes connect to the thumb screws. Firmly tighten both thumb screws.

Step 5

Tighten the hex head screws with a 7/16" wrench.

Step 6

If components are in upright position, proceed to next step.

OR

Your furniture should now be fully assembled and ready for to tilt into an upright position. It is especially critical two or more persons tilt assembled furniture into the upright position to prevent injury or damage to furniture.

NOTE: If four (4) or more components are being fastened together, Tropitone recommends the components are assembled in pairs, then assemble the pairs together. It is

Instructions continue on back page!